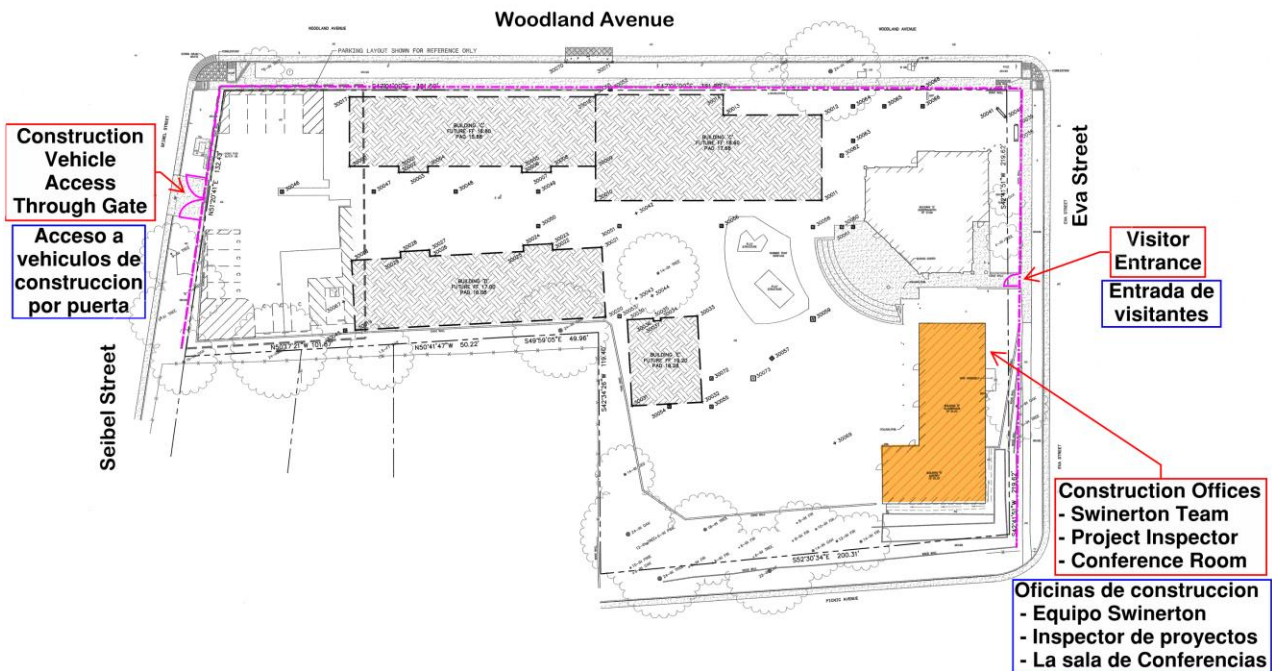


Laurel Dell Elementary School Community Notice

Major work on the Laurel Dell campus School begins October 9, 2018. Construction fencing will be installed around the site with the main construction access entrance on Siebel Street at the current parking entrance and single gate access on Eva Street. Public sidewalks will remain open for use. Later in Fall, all buildings except the existing east buildings will be demolished with construction of new buildings scheduled to begin January 2019. Final construction is scheduled to be completed a year later. We hope you are excited to see us improving our San Rafael City Schools as we make progress as promised.

Please note: There will be temporary sidewalk and road closures during utility and demolition on Woodland Avenue in November/December. Street parking may be utilized by construction personnel. We will continue to update you.



Quick Look Schedule:

- Abatement of existing buildings October 9 through October 29
- Demolition of existing buildings, underground utility work, grading for the new buildings and site through December 2018
- Construction of new buildings commences January 2019

If you have any questions, please contact Dr. Dan Zaich, Senior Director, Capital Improvements

415-492-3285 or dzaich@srcs.org

24-hour Construction Hotline: (888) 446-SRCS (7727)

www.srcsbondprogram.org